



For (HP 88)
 • HP Officejet Pro
 K550/K550dtn
 K550dtwn/K5400/K5400tn
 /K5400dtn
 L7580/L7650/L7680/L7780

This packing including

- 1). Continuous ink system 1 Set
- 2). Pipeline Clincher or Arm Support 1 Set
- 3). Installation Instruction 1 Copy
- 4). Syringe 1 Set

Attention

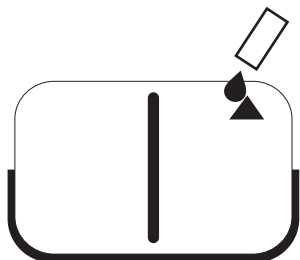
1. Not drinkable, keep it out of the reach of children
2. Avoid exposure to direct sunshine and don't keep it at the high or freezing temperature.
3. Avoid collision and falling down.
4. Please do not take out the cartridges at random after installing the ink system.
5. Using it in the temperature of 10-40°C
6. The ink system has passed the strict compatible checking, so we suggest using our ink and cartridges to keep the printing quality.
7. Mixing two different brand inks into the ink system is not recommended.

8. Keep the ink tanks and printer in the same level. Do not place the tanks higher or lower than their printer

Refill ink

When filling ink, you should pull out the rubber plugs from the sprue of the ink cartridge, use a common syringe to connect to the sprue, pull the syringe piston for air-removing, the inks will then flow into the ink cartridge automatically. After filling, stuff the rubber plug.

When the inks of ink tanks are low than the INK LEVEL(ink image on the surface of tanks), you must need to refill inks.

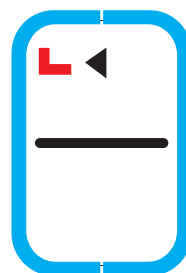
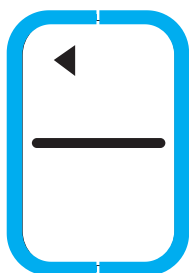


**OPEN LEFT COVERS
 FILL INK WITH A SYRINGE WITH NEEDLE**

**NEED REMOVE AIR WHEN FILL INK
 INTO EMPTY INK SYSTEM AT 1ST TIME**

Tanks work :

- 1 OPEN LEFT COVERS
- 2 REPLACE ALL THE PLUGS to 'L' PLUGS
- 3 CLOSE LEFT COVERS



WHEN WORKS, OPEN ALL THE PLUGS ON ARROW SIDES



For (HP 88)
 • HP Officejet Pro
 K550/K550dtn
 K550dtwn/K5400/K5400tn
 /K5400dtn
 L7580/L7650/L7680/L7780

- 💧 Continuous ink system
- 💧 Continuous ink supply system
- 💧 Continuous ink flow system
- 💧 Continuous ink feed system
- 💧 Bulk ink system

Unpacking Instruction

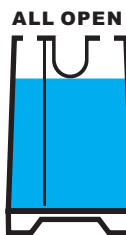
1. CIS ink system (Continuous ink system) 1 Set
2. Pipeline Clincher or Arm Support 1 Set
3. Installation Instruction 1 pcs
4. Syringe 1 set

Note

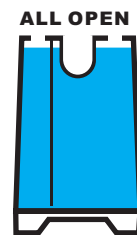
1. Not drinkable, keep it out of the reach of children
2. Avoid exposure to direct sunshine and don't keep it in the high or freezing temperature.
3. Avoid collision and fallen down.
4. Please do not take out the cartridges at random after install the CIS ink system.
5. Using it in the temperature of 10-40°C
6. The CIS ink system has passed the strict compatible checking, we recommend to use our ink, to ensure the printing quality.
7. Mix two different brand ink into the CIS ink system is not recommended.

8. Keep the ink tanks and printer in the same level. Do not place the tanks higher or lower than their printer

Refilling ink



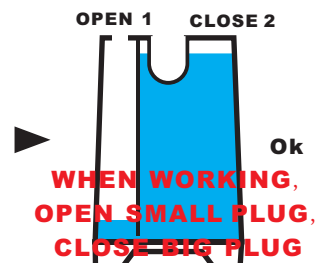
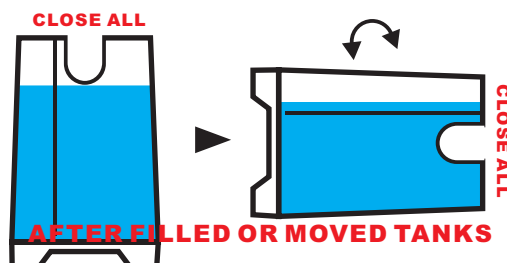
FILL INK TO THIS LEVEL
(Only for reference)



FILL INK HIGHT TO FULL
(No recommend)

When you want to filling ink, firstly, please pull out the rubber plugs from the fill-hole of the ink tank; use a common syringe to fill ink (please see the step as picture 2); and then, pull out rubber plugs from the CIS cartridge and use a syringe to draw air, pull the syringe position for air-removing (please see the step as picture 3), then the ink will flow into the ink cartridges from the tanks automatically. After filled, you need to stuff all holes with the rubber plugs.

Tanks working :





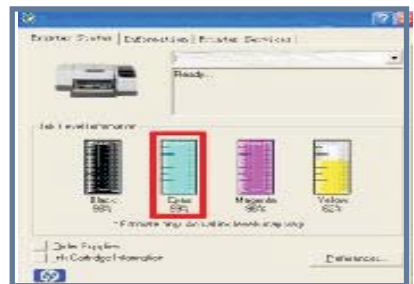
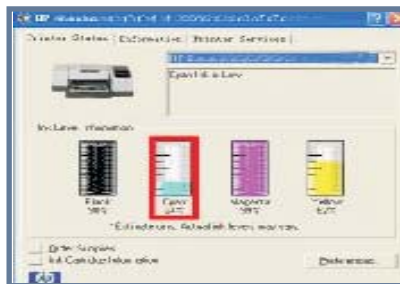
- 1 Open cover for Inkjet cartridges. Remove the original cartridges. Insert our no-sponge cartridge into printer carefully.



- 2 Slightly press every cartridge to check all the cartridges are in the correct position. Please be careful with the tubes which go out from Cartridge Carrier. Then stick the Support Arm on the position which shown in the third picture.



- 3 Use paper make taper style and Insert the paper into the printer hole. Then cartridge-cover can be recognized cover well. Finished.



Reset Procedure

If the indicator light flashing when printing, it tells that you need to reset the chip to full status. Please turn off your printer for about 30 seconds and switch it back on. Ink meter bar shall show full ink. You can start printing as usual.