

General install way  
**For CAN Printers**



*This packing including*

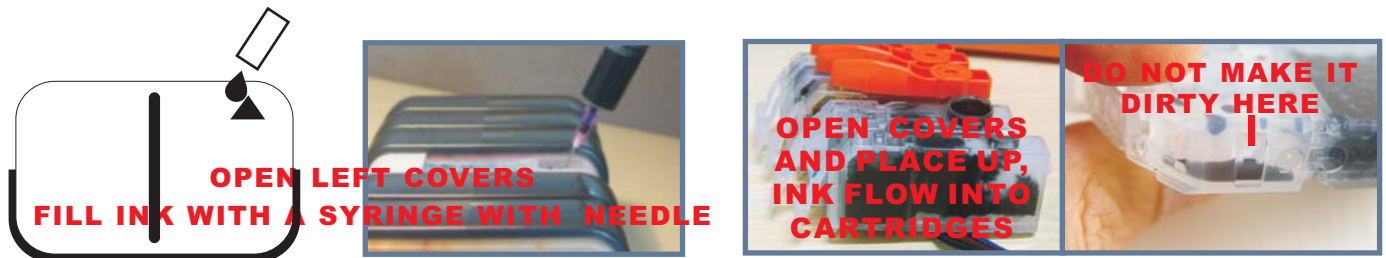
- 1). Continuous ink system 1 Set
- 2). Pipeline Clincher or Arm Support 1 Set
- 3). Installation Instruction 1 Copy
- 4). Syringe 1 Set

Attention

1. Not drinkable, keep it out of the reach of children
2. Avoid exposure to direct sunshine and don't keep it at the high or freezing temperature.
3. Avoid collision and falling down.
4. Please do not take out the cartridges at random after installing the ink system.
5. Using it in the temperature of 10-40°C
6. The ink system has passed the strict compatible checking, so we suggest using our ink and cartridges to keep the printing quality.
7. Mixing two different brand inks into the ink system is not recommended.

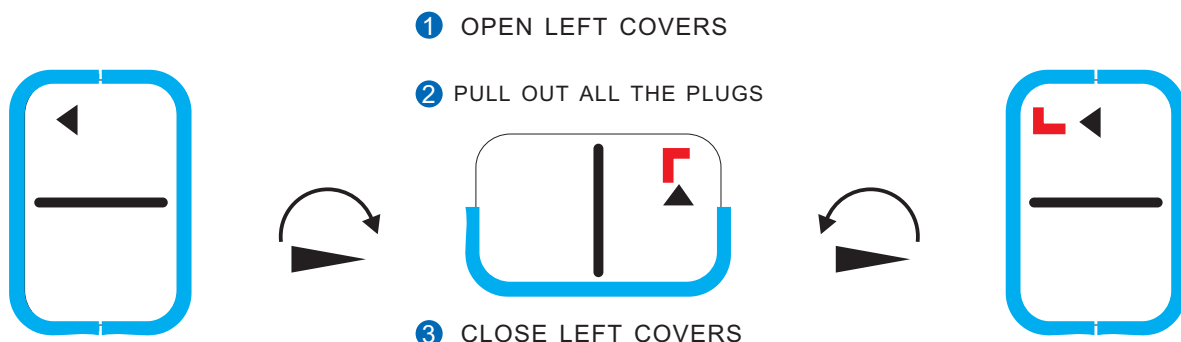
**8. Keep the ink tanks and printer in the same level. Do not place the tanks higher or lower than their printer**

Refill ink



When filling ink , remove all the rubber plugs from the sprue of the ink cartridge, use a common syringe to connect to the sprue, pull the syringe piston for air-removing, and open the covers of cartridges, hold the tanks high up, the ink will then flow into the ink cartridge automatically. After filling, stuff the rubber plugs and cartridge covers.

Tanks work :



WHEN WORKS, OPEN ALL THE PLUGS ON ARROW SIDES

General install way  
**For CAN Printers**



*This packing including*

- 1). Continuous ink system 1 Set
- 2). Pipeline Clincher or Arm Support 1 Set
- 3). Installation Instruction 1 Copy
- 4). Syringe 1 Set

Attention

1. Not drinkable, keep it out of the reach of children
2. Avoid exposure to direct sunshine and don't keep it at the high or freezing temperature.
3. Avoid collision and falling down.
4. Please do not take out the cartridges at random after installing the ink system.
5. Using it in the temperature of 10-40°C
6. The ink system has passed the strict compatible checking, so we suggest using our ink and cartridges to keep the printing quality.
7. Mixing two different brand inks into the ink system is not recommended.

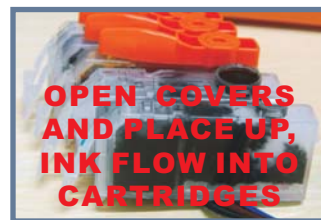
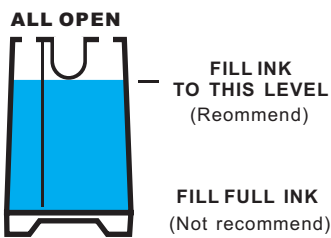
**8. Keep the ink tanks and printer in the same level. Do not place the tanks higher or lower than their printer**

9. Before you install this ink system, please remove the remainder inks on the print heads, the way is as below



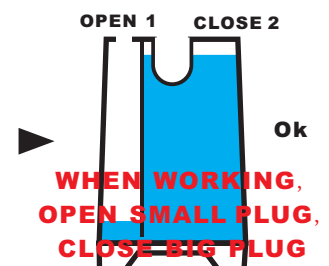
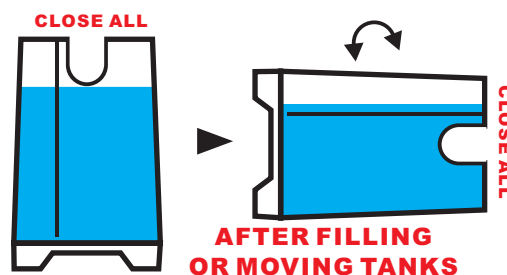
**keep the old cartridges in the printer. clean heads for some times, untill can not print out any colors'**

Refilling ink



When filling ink, remove all the rubber plugs from the sprue of the ink cartridge, use a common syringe to connect to the sprue, pull the syringe piston for air-removing, and open the covers of cartridges, hold the tanks high up, the ink will then flow into the ink cartridge automatically. After filling, stuff the rubber plugs and cartridge covers.

Tanks work :






- 1 INSTALL CHIPS** ▶▶ (if the original ink cartridge without chips, you can ignore this step)  
Carefully remove the original chips from original cartridges as the above pictures. Pay more attention to the chips when you do this procedure, make sure that the chips are not damaged.

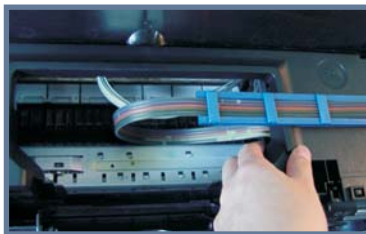
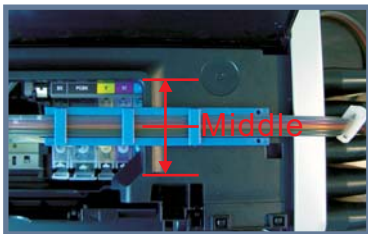


Put some glue on the socket of system's cartridge. Then stick original chips into the socket according to the color of cartridges. Please make sure that the chips no matches with cartridge number.

*IF YOUR ORIGINAL INK CARTRIDGE WITHOUT CHIPS, YOU CAN IGNORE THIS STEP*



- 2 INSTALL CARTRIDGES** ▶▶ PLEASE MAKE SURE THAT YOU HAVE PRINTED CLEAN ALL REMAINING INKS   
Place the pipelines lock on 'lock' position. Then place the cartridges into printer.  
Please press the cartridge and make sure that every cartridge is well installed according to the color label.



- 3 INSTALL PIPELINES** ▶▶ Clamp the pipelines into the support arm as the above pictures shown.  
**ADJUST PIPELINES** ▶▶ Adjust the pipelines length and move the cartridge carriage from left to right for several times.  
Please make sure there will be no block and collision when the cartridges moving from one side to the other.  
Insure there's plenty length of tube to make the cartridge carriage which can move to the right side thoroughly.



- 4** After adjust the pipelines well , please insert the hole of printer cover with a small paper.  
Place the pipelines lock on the 'open' position.  
Close the cover of printer.  
Finish, ready to use

Reset cartridges



If use for a long time ,the computer tells you to replace cartridge doesn't work, and the ink light lights press the 'fresh' button for 5 seconds, sometime need redo several times, then the light is off, all ok.





▼ For 190



▼ For 195D



▼ For 1990 & Ip3000



▼ For Ip1000



▼ For IP6000D

