



For EPN

- 780/790/870/890/895/915 /810/830U/830/925/935
- 1270/1280/1290

- Continuous ink system
- Continuous ink supply system
- Continuous ink flow system
- Continuous ink feed system
- Bulk ink system

Unpacking Instruction

1. CIS ink system (Continuous ink system) 1 Set
2. Pipeline Clincher or Arm Support 1 Set
3. Installation Instruction 1 Copy
4. Syringe 1 Set

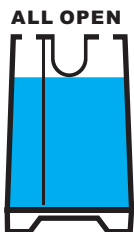
Note

1. Not drinkable, keep it out of the reach of children
2. Avoid exposure to direct sunshine and don't keep it at the high or freezing temperature.
3. Avoid collision and falling down.
4. Please do not take out the cartridges at random after installing the CIS ink system.
5. Using it in the temperature of 10-40°C
6. The CIS ink system has passed the strict compatible checking, so we suggest using our ink and cartridges to keep the printing quality.
7. Mixing two different brand inks into the CIS ink system is not recommended.

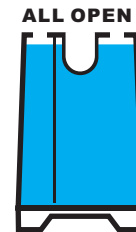
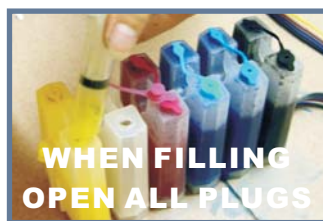
8. Keep the ink tanks and printer in the same level. Do not place the tanks higher or lower than their printer

Refilling ink

When filling ink, you should pull out the rubber plugs from the sprue of the ink cartridge, use a common syringe to connect to the sprue, pull the syringe piston for air-removing, the inks will then flow into the ink cartridge automatically. After filling, stuff the rubber

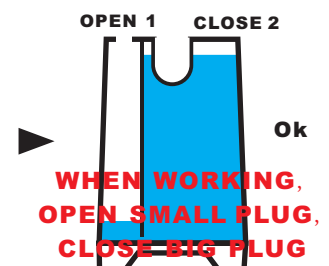
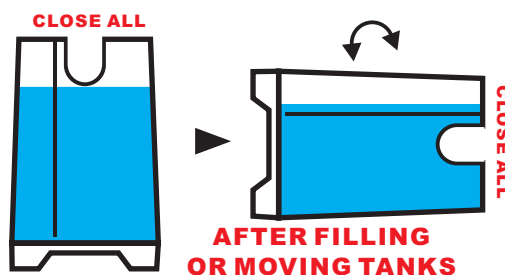
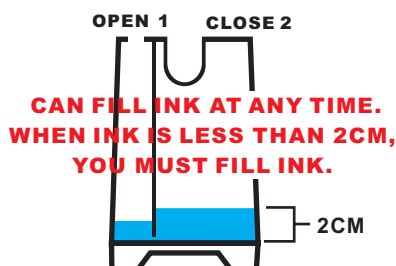


FILL INK TO THIS LINE
(Only for reference)



FILL FULL INK
(Not recommended)

Tanks working :



- 1 Press the "ink cartridge replace Button"
Move the cartridge to the cartridge to cartridge remove position
Unplug the power connector



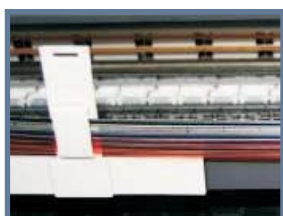
- 2 Remove original cartridges.
Insert the CIS cartridges into printer carefully.
Close the cover for cartridges



- 3 Tear off the sticker.
Fix the arm on the 26cm right far from you printer.
Tear off the sticker



- 4 Fix the balance arm.
Tear off the sticker of clamp.
Attached the clamp on your printer and let it parallel with printer

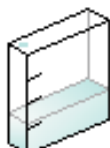


- 5 Insert tubeline through the arm



- 6 Adjust the tubeline, remove the Cartridge-car back and forth.
Make sure tubeline will not meet printer when printing .
Make sure the length of tubeline is enough to reach the far left and right.

Reset cartridges:



The ink will be showed less and lessr when printing, as the original cartridges.
The chips for CIS can auto reset when the printer show '0' capacity ink.
If use for a long time ,the computer tells you to replace cartridge doesn't work,
Power off the printer for 1 minute, then restart ok.