

For CAN Printer series



- 💧 Continuous ink system
- 💧 Continuous ink supply system
- 💧 Continuous ink flow system
- 💧 Continuous ink feed system
- 💧 Bulk ink system

Unpacking Instruction

1. CIS ink system (Continuous ink system) 1 Set
2. Pipeline Clincher or Arm Support 1 Set
3. Installation Instruction 1 Copy
4. Syringe 1 Set

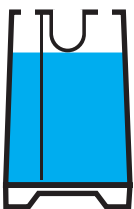
Note

1. Not drinkable, keep it out of the reach of children
2. Avoid exposure to direct sunshine and don't keep it in the high or freezing temperature.
3. Avoid collision and fallen down.
4. Please do not take out the cartridges at random after install the CIS ink system.
5. Using it in the temperature of 10-40°C
6. The CIS ink system has passed the strict compatible checking, we recommend to use our ink, to ensure the printing quality.
7. Mixing two different brand inks into the CIS ink system is not recommended.

**8. Keep the ink tanks and printer in the same level. Do not place the tanks higher or lower than their printer**

Refilling ink

ALL OPEN



FILL INK TO THIS LEVEL  
(Only for reference)

FILL FULL INK  
(Not recommended)



**WHEN FILLING OPEN ALL PLUGS**



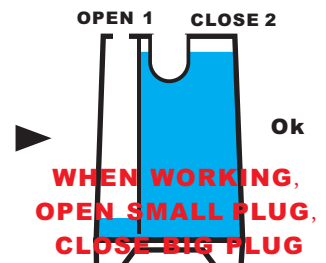
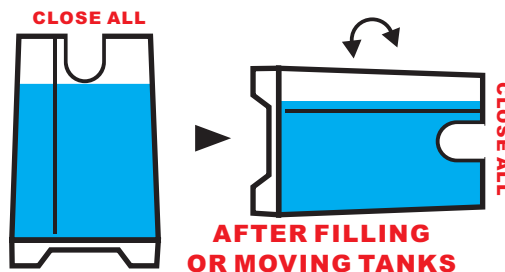
**OPEN COVERS AND PLACE UP, INK FLOW INTO CARTRIDGES**



**DO NOT MAKE IT DIRTY HERE**

When filling ink, remove all the rubber plugs from the sprue of the ink cartridge, use a common syringe to connect to the sprue, pull the syringe piston for air-removing, and open the covers of cartridges, hold the tanks high up, the ink will then flow into the ink cartridge automatically. After filling, stuff the rubber plugs and cartridge covers.

Tanks working :

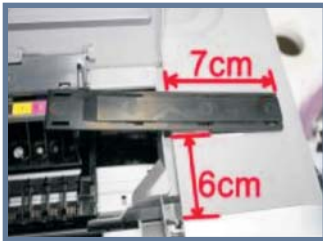




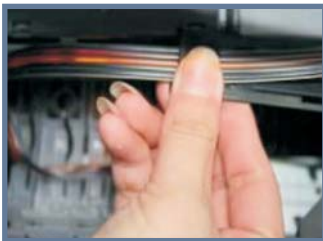
**1 INSTALL CHIPS** ▶▶ Carefully remove the original chips from original cartridges as the above pictures. Pay more attention to the chips when you do this procedure, make sure that the chips are not damaged.



Put some glue on the socket of system's cartridge. Then stick original chips into the socket according to the color of cartridges. Please make sure that the chips no matches with cartridge number.



**2 INSTALL CARTRIDGES** ▶▶ stick the Support arm on the proper position as the above pictures shown. Then place the CIS cartridges into: printer. Please press the cartridge and make sure that every cartridge is well installed according to the color label.



**3 INSTALL TUBING** ▶▶ Clamp the tube into the support arm as the above pictures shown.



**4 ADJUST TUBING** ▶▶ Adjust the tube length and move the cartridge carriage from left to right for several times. Please make sure there will be no block and collision when the cartridges moving from one side to the other. Insure there's plenty length of tube to make the cartridge carriage wich can move to the right side thoroughly.



Tube excessive long



Tube twisted



Well-installed

Reset cartridges (for Canon)

If use for a long time ,the computer tells you to replace cartridge doesn't work, and the ink light lights press the button "paper" for 5 seconds, maybe need redo several times, then the light is off, all ok.



▼ For 190



▼ For 195D



▼ For 1990 & Ip3000



▼ For Ip1000



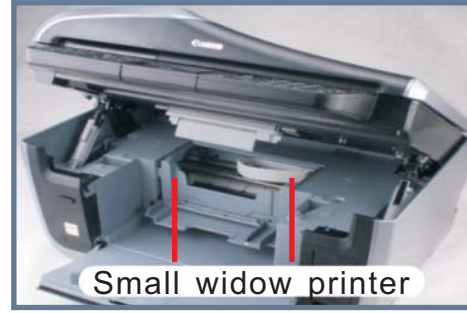
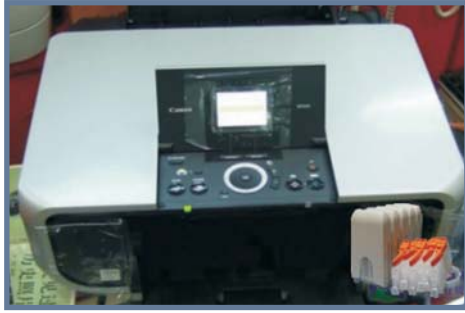
▼ For IP6000D



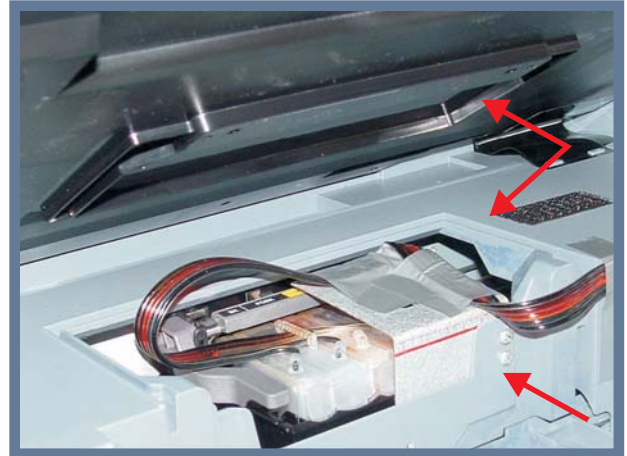
▼ For MP830





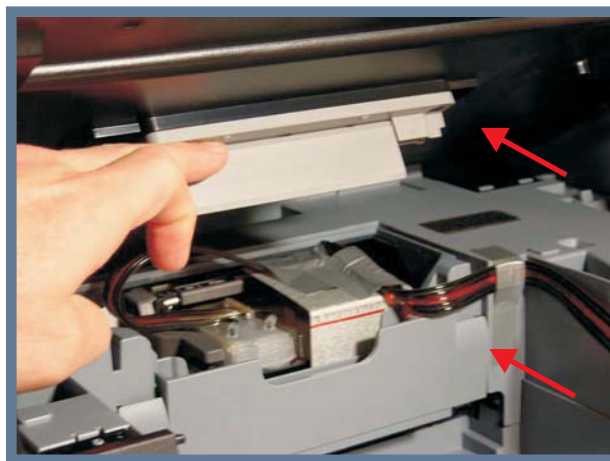


Installation Procedure for All-in-one printers or small widow printers)



### When install CIS for CAN MPxxx series printers

- 1) The first problem is caused by a gutter around the cartridge access area in the lower part of the MP830 (printer section), with a mating ridge in the upper part of the MP830 (scanner section). If you install the ink tube ribbon using the printer installation method, this gutter will pinch the ribbon and block the ink flow when you lower the scanner section.
- 2) The second problem is caused by a "blocker" panel which is attached to the underside of the scanner section. This hinged panel interfaces with an assembly in the lower printer section of the MP830, to effectively block access to the cartridge area. Fortunately this panel can be taken off easily by removing the two screws that secure it. It serves no other purpose. By removing this "blocker" panel, the front of the cartridge area can now be accessed, which provides a route for our ink tube ribbon.



To support the ink tube ribbon please use an angle bracket of sheet metal that attaches in front of the print carriage to the inside of the printer chassis with two self tapping screws (through two holes you can drill into the chassis). The holes in the plastic are large enough for the screws to pass through. The holes in the bracket are smaller so that the screw tap into the metal. The bracket need not be as wide as the one I used. The placement of the screws is important.

They need to clear the CD feed tray when in its upright position. The screws need to be just long enough to secure the bracket, as clearance is minimal and screws that are too long will jam the printer carriage as it goes by. I have used duct tape to secure the ink tube ribbon to my bracket, but cable ties would be a better and more permanent option.

