

For EPN series



This packing including

- 1). Continuous ink system 1 Set
- 2). Pipeline Clincher or Arm Support 1 Set
- 3). Installation Instruction 1 Copy
- 4). Syringe 1 Set

Attention

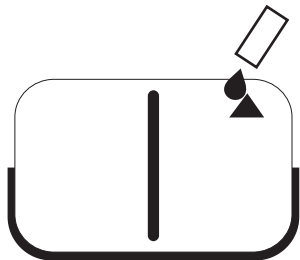
1. Not drinkable, keep it out of the reach of children
2. Avoid exposure to direct sunshine and don't keep it at the high or freezing temperature.
3. Avoid collision and falling down.
4. Please do not take out the cartridges at random after installing the ink system.
5. Using it in the temperature of 10-40°C
6. The ink system has passed the strict compatible checking, so we suggest using our ink and cartridges to keep the printing quality.
7. Mixing two different brand inks into the ink system is not recommended.

8. Keep the ink tanks and printer in the same level. Do not place the tanks higher or lower than their printer

Refill ink

When filling ink, you should pull out the rubber plugs from the sprue of the ink cartridge, use a common syringe to connect to the sprue, pull the syringe piston for air-removing, the inks will then flow into the ink cartridge automatically. After filling, stuff the rubber plug.

When the inks of ink tanks are low than the INK LEVEL(ink image on the surface of tanks), you must need to refill inks.



OPEN LEFT COVERS

FILL INK WITH A SYRINGE WITH NEEDLE



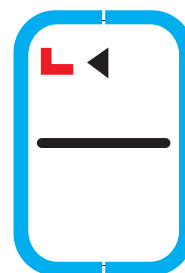
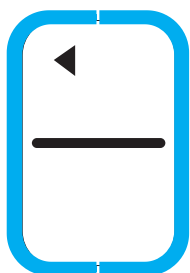
NEED REMOVE AIR WHEN FILL INK INTO EMPTY INK SYSTEM AT 1ST TIME

Tanks work :

① OPEN LEFT COVERS

② REPLACE ALL THE PLUGS to 'L' PLUGS

③ CLOSE LEFT COVERS



WHEN WORKS. OPEN ALL THE PLUGS ON ARROW SIDES

CIS For EPN



- 💧 Continuous ink system
- 💧 Continuous ink supply system
- 💧 Continuous ink flow system
- 💧 Continuous ink feed system
- 💧 Bulk ink system

Unpacking Instruction

- 1).Continuous ink system 1 Set 2). Pipeline Clincher or Arm Support 1 Set 3).Installation Instruction 1 Copy 4).Syringe 1 Set

Attention

1. Not drinkable, keep it out of the reach of children
2. Avoid exposure to direct sunshine and don't keep it at the high or freezing temperature.
3. Avoid collision and falling down.
4. Please do not take out the cartridges at random after installing the CIS ink system.
5. Using it in the temperature of 10-40°C
6. The CIS ink system has passed the strict compatible checking, so we suggest using our ink and cartridges to keep the printing quality.
7. Mixing two different brand inks into the CIS ink system is not recommended.

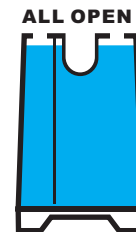
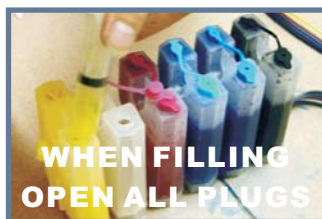
8. Keep the ink tanks and printer in the same level. Do not place the tanks higher or lower than their printer

Refilling ink

When filling ink , you should pull out the rubber plugs from the sprue of the ink cartridge, use a common syringe to connect to the sprue, pull the syringe piston for air-removing, the inks will then flow into the ink cartridge automatically. After filling, stuff the rubber



FILL INK TO THIS LINE
(Only for reference)

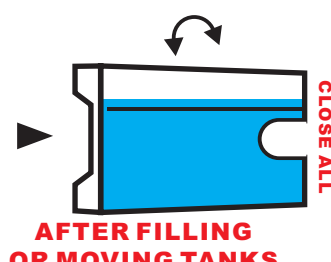
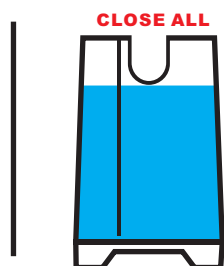


FILL FULL INK
(Not recommended)

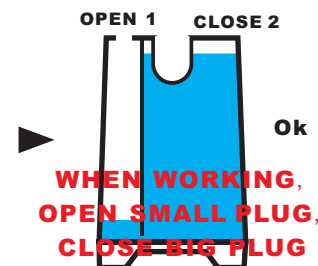
Tank working



CAN FILL INK AT ANY TIME.
WHEN INK IS LESS THAN 2CM,
YOU MUST FILL INK.



AFTER FILLING
OR MOVING TANKS



WHEN WORKING,
OPEN SMALL PLUG,
CLOSE BIG PLUG

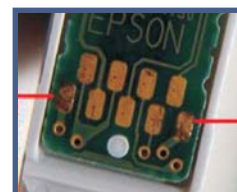
Insert an original cartridge (when need)

In general time, this ink system do not need an original cartridge when works.



If you face printer version problem, please notice as below.

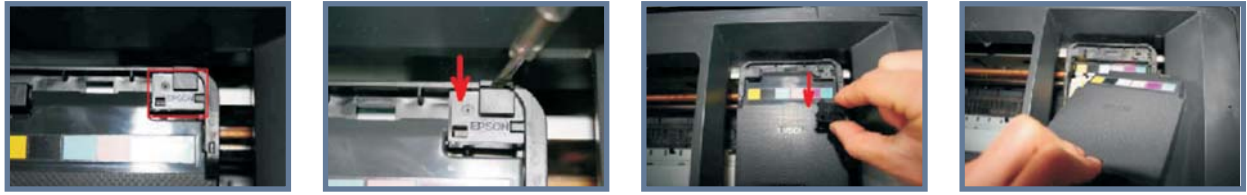
Insert the original cartridge with its chip well-contact with the spring.



Make sure the chips can be touched well with the springs.

The springs should touch these points

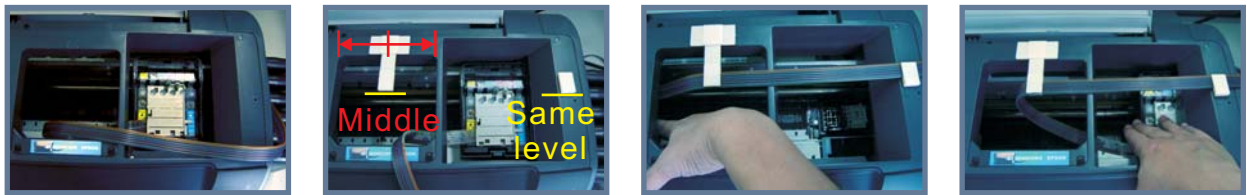
- 1 Remove ink cartridge holder lid and previous ink cartridges
With printer powered on, press the 'change cartridge' button.
When ink cartridge holder is in the 'change' position, remove the power cord from the printer.



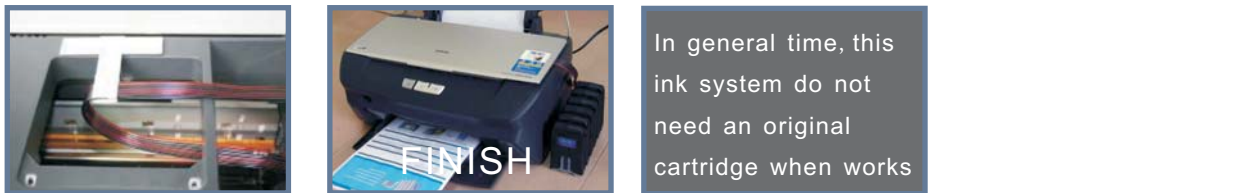
- 2 Place flat-edged screwdriver into the slit of the retaining clip marked 'ENP logo'. Push down slowly until clip disengages and remove clip.
Remove the lid, then remove all prior ink cartridges
Printer is now ready for installation of the ink System



- 3 Install the ink System
Manually move ink cartridge holder to the left.
Install the ink system component into the left side of the printer frame, through the frame divider and place it to the right of printer as shown above.
Move ink cartridge holder back to original 'change' cartridge position



- 4 Looking into the printer from above, install support clip as shown, affixing it at the edge of the white metal strip.
Install the support clip as the pictures



- 5 Moving the ink cartridge holder to the left, adjust the length of the tubing so that it neither impairs printer head movement, nor strikes the printer in the push movement of the printer Head.

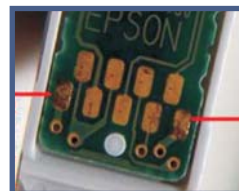
In general time, this ink system do not need an original cartridge when works

Insert an original cartridge (when need)



If you meet a printer date problem, please place the switch on 'down' .

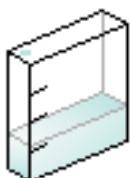
Insert the original cartridge with its chip well-contact with the spring.



Make sure the chips can be touched well with the springs.

The springs should touch these points

Reset cartridges:

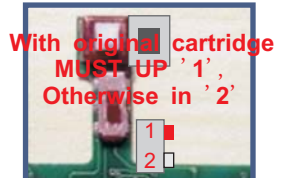


The ink will be showed less and less when printing, as the original cartridges.

At last ,the computer will tell you to replace cartridge . **Keep the power, open the cover of printer, do not need to remove the CIS cartridges** , then press the switch on the cartridge for 1 times, or power off the printer for 1 minute, restart ok.

When do not use the original cartridge, place in '2' position.

When in '1' position, must use an original cartridge. A brand new original cartridge is recommended



With original cartridge **MUST UP '1'**, Otherwise in '2'



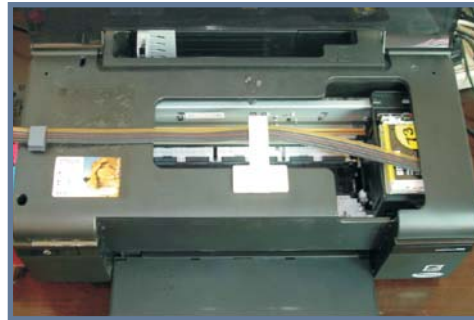
C79/C90/C91/C92/D78/D92



R270/R260/R265/R390/RX590/RX580/RX595/RX680



R280/R285/R290/R380



C110/C120/D120



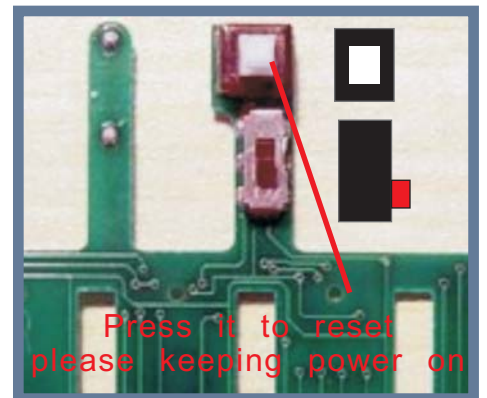
CX3900/CX4900/CX5500/CX5600/CX5900/
CX7300/CX8300/CX7400/CX5505/DX4400/DX7400



1390/1400/1410



Attention for printer hardware updated



Epson company conflicts with compatible cartridge manufacturers, and continuously upgrade the printer hardware (the same type of printers have different versions of the hardware), it is the same as Microsoft WINDOWS .

As a compatible cartridge manufacturer, as allowed by the law , we have continued to improve our products to fit the printer's version. Therefore, we can not guarantee that the CIS products on your hands are supported the latest printers, but we guarantee our CIS products for production suitable printers.