

For CAN

- i865
- /Ip4000/iP5000
- /MP780/MP 750/MP 760

- 💧 Continuous ink system
- 💧 Continuous ink supply system
- 💧 Continuous ink flow system
- 💧 Continuous ink feed system
- 💧 Bulk ink system

Unpacking Instruction

1. CIS ink system (Continuous ink system) 1 Set
2. Pipeline Clincher or Arm Support 1 Set
3. Installation Instruction 1 Copy
4. Syringe 1 Set

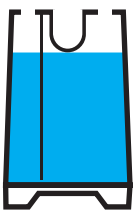
Note

1. Not drinkable, keep it out of the reach of children
2. Avoid exposure to direct sunshine and don't keep it in the high or freezing temperature.
3. Avoid collision and fallen down.
4. Please do not take out the cartridges at random after install the CIS ink system.
5. Using it in the temperature of 10-40°C
6. The CIS ink system has passed the strict compatible checking, we recommend to use our ink, to ensure the printing quality.
7. Mixing two different brand inks into the CIS ink system is not recommended.

8. Keep the ink tanks and printer in the same level. Do not place the tanks higher or lower than their printer

Refilling ink

ALL OPEN



FILL INK TO THIS LEVEL
(Only for reference)

FILL FULL INK
(Not recommended)



WHEN FILLING OPEN ALL PLUGS



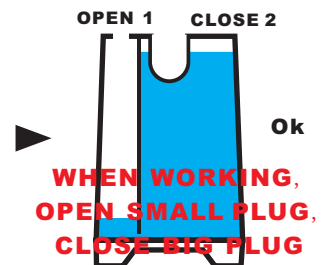
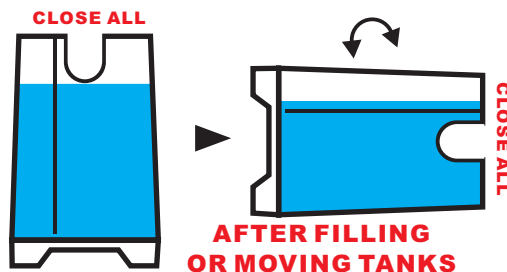
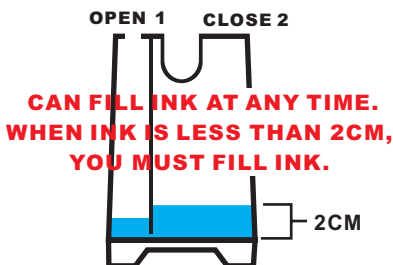
OPEN COVERS AND PLACE UP, INK FLOW INTO CARTRIDGES



DO NOT MAKE IT DIRTY HERE

When filling ink, remove all the rubber plugs from the sprue of the ink cartridge, use a common syringe to connect to the sprue, pull the syringe piston for air-removing, and open the covers of cartridges, hold the tanks high up, the ink will then flow into the ink cartridge automatically. After filling, stuff the rubber plugs and cartridge covers.

Tanks working :

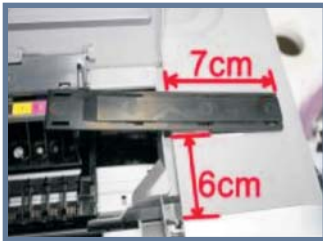




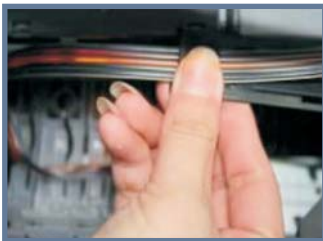
1 INSTALL CHIPS ▶▶ Carefully remove the original chips from original cartridges as the above pictures. Pay more attention to the chips when you do this procedure, make sure that the chips are not damaged.



Put some glue on the socket of system's cartridge. Then stick original chips into the socket according to the color of cartridges. Please make sure that the chips No matches with cartridge No.



2 INSTALL CARTRIDGES ▶▶ stick the Support arm on the proper position as the above picture shown. Then place the CIS cartridges into: printer. Please press the cartridge and make sure that every cartridge is well installed according to the color label.



3 INSTALL TUBING ▶▶ Clamp the tube into the support arm as the above pictures shown.



4 ADJUST TUBING ▶▶ Adjust the tube length and move the cartridge carriage from left to right for several times. Please make sure there will be no block and collision when the cartridges moving from one side to the other. Insure there's plenty length of tube to make the cartridge carriage can move to the right side thoroughly.



Tube excessive long



Tube twisted



Well-installed

If use for a long time ,the computer tells you to replace cartridge doesn't work, and the ink light lights press the button "paper" for **5 seconds**, maybe need redo several times, then the light is off, all ok.