

For EPN

- R260/R265/R270/R360/R390
- /RX590/RX580/RX595/RX680



This packing including

- 1). Continuous ink system 1 Set
- 2). Pipeline Clincher or Arm Support 1 Set
- 3). Installation Instruction 1 Copy
- 4). Syringe 1 Set

Attention

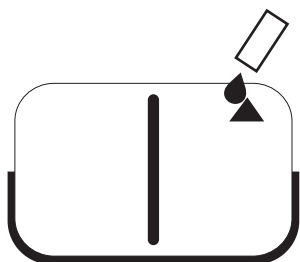
1. Not drinkable, keep it out of the reach of children
2. Avoid exposure to direct sunshine and don't keep it at the high or freezing temperature.
3. Avoid collision and falling down.
4. Please do not take out the cartridges at random after installing the ink system.
5. Using it in the temperature of 10-40°C
6. The ink system has passed the strict compatible checking, so we suggest using our ink and cartridges to keep the printing quality.
7. Mixing two different brand inks into the ink system is not recommended.

8. Keep the ink tanks and printer in the same level. Do not place the tanks higher or lower than their printer

Refill ink

When filling ink, you should pull out the rubber plugs from the sprue of the ink cartridge, use a common syringe to connect to the sprue, pull the syringe piston for air-removing, the inks will then flow into the ink cartridge automatically. After filling, stuff the rubber plug.

When the inks of ink tanks are low than the INK LEVEL(ink image on the surface of tanks), you must need to refill inks.



OPEN LEFT COVERS

FILL INK WITH A SYRINGE WITH NEEDLE



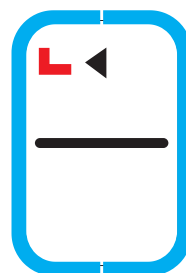
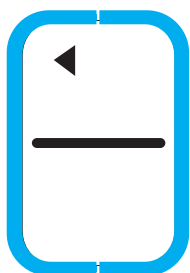
NEED REMOVE AIR WHEN FILL INK INTO EMPTY INK SYSTEM AT 1ST TIME

Tanks work :

① OPEN LEFT COVERS

② REPLACE ALL THE PLUGS to 'L' PLUGS

③ CLOSE LEFT COVERS



WHEN WORKS, OPEN ALL THE PLUGS ON ARROW SIDES



For EPN
 • R260/R265/R270/R360/R390
 • /RX590/RX580/RX595/RX680

- 💧 Continuous ink system
- 💧 Continuous ink supply system
- 💧 Continuous ink flow system
- 💧 Continuous ink feed system
- 💧 Bulk ink system

Unpacking Instruction

1. CIS ink system (Continuous ink system) 1 Set
2. Pipeline Clincher or Arm Support 1 Set
3. Installation Instruction 1 Copy
4. Syringe 1 Set

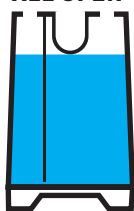
Note

1. Not drinkable, keep it out of the reach of children
2. Avoid exposure to direct sunshine and don't keep it in the high or freezing temperature.
3. Avoid collision and fallen down.
4. Please do not take out the cartridges at random after installing the CIS ink system.
5. Using it in the temperature of 10-40°C
6. The CIS ink system has passed the strict compatible checking, so we suggest to use our ink and cartridges to keep the printing quality.
7. Mix two different brand ink into the CIS ink system is not recommended.

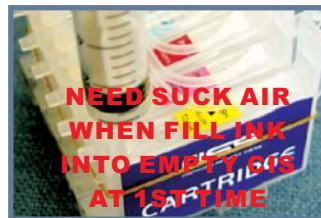
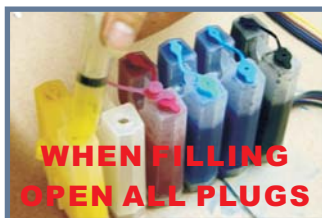
8. Keep the ink tanks and printer in the same level. Do not place the tanks higher or lower than their printer

Refilling ink

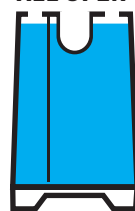
ALL OPEN



FILL INK TO THIS LEVEL
 (Only for reference)



ALL OPEN



FILL INK HIGHT TO FULL
 (No recommend)

When you want to filling ink, firstly, please pull out the rubber plugs from the fill-hole of the ink tank; use a common syringe to fill ink (please see the step as picture 2); and then, pull out rubber plugs from the CIS cartridge and use a syringe to draw air, pull the syringe position for air-removing (please see the step as picture 3), then the ink will flow into the ink cartridges from the tanks automatically. After filled, you need to stuff all holes with the rubber plugs.

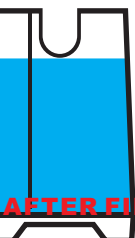
Tanks working :

OPEN 1 CLOSE 2

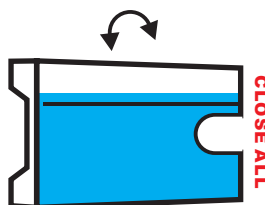
CAN FILL INK ANY TIME,
 WHEN INK IS TOO LOW,
 MUST FILL INK.



CLOSE ALL



AFTER FILLED OR MOVED TANKS



OPEN 1 CLOSE 2

Ok
 WHEN WORKING,
 OPEN SMALL PLUG,
 CLOSE BIG PLUG



- 1 Remove ink cartridge holder lid and previous ink cartridges
With printer powered on, press the 'change cartridge' button.
When ink cartridge holder is in the 'change' position, remove the power cord from the printer.



- 2 Place flat-edged screwdriver into the slit of the retaining clip marked 'EP logo'. Push down slowly until clip disengages and remove clip.
Remove the lid, then remove all prior ink cartridges
Printer is now ready for installation of the CIS ink System



- 3 Install CIS ink System ink component
Manually move ink cartridge holder to the left.
Install the CISS system component into the left side of the printer frame, through the frame divider and place it to the right of printer as shown above.
Move ink cartridge holder back to original 'change' cartridge position



- 4 Looking into the printer from above, install support clip as shown, affixing it at the edge of the white metal strip.
Install the second support clip at a 30 degree angle on the front of printer, to the right of the operation buttons.

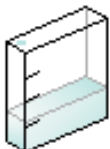


- 5 Twist tubing to a 90 degree angle running the length of the carriage, turn gently and lock tubing into both the inside and outside support clips.



- 6 Moving the ink cartridge holder to the left, adjust the length of the tubing so that it neither impairs printer head movement, nor strikes the printer in the push movement of the printer Head.

Notice for cartridges:



The ink will be showed less and lessr when printing, as the original cartridges.
The chips for CIS can auto reset when the printer show '0' capacity ink.
If use for a long time ,the computer tells you to replace cartridge doesn't work,
Power off the printer for 1 minute, then restart ok.