

General way for BRO printers



This packing including

- 1). Continuous ink system 1 Set
- 2). Pipeline Clincher or Arm Support 1 Set
- 3). Installation Instruction 1 Copy
- 4). Syringe 1 Set

Attention

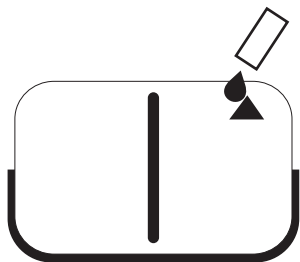
1. Not drinkable, keep it out of the reach of children
2. Avoid exposure to direct sunshine and don't keep it at the high or freezing temperature.
3. Avoid collision and falling down.
4. Please do not take out the cartridges at random after installing the ink system.
5. Using it in the temperature of 10-40°C
6. The ink system has passed the strict compatible checking, so we suggest using our ink and cartridges to keep the printing quality.
7. Mixing two different brand inks into the ink system is not recommended.

8. Keep the ink tanks and printer in the same level. Do not place the tanks higher or lower than their printer

Refill ink

When filling ink, you should pull out the rubber plugs from the sprue of the ink cartridge, use a common syringe to connect to the sprue, pull the syringe piston for air-removing, the inks will then flow into the ink cartridge automatically. After filling, stuff the rubber plug.

When the inks of ink tanks are low than the INK LEVEL (ink image on the surface of tanks), you must need to refill inks.



OPEN LEFT COVERS

FILL INK WITH A SYRINGE WITH NEEDLE



INK LEVEL



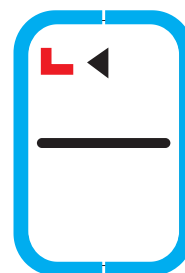
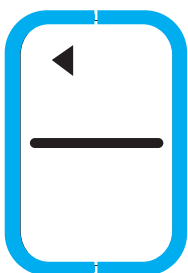
NEED REMOVE AIR WHEN FILL INK INTO EMPTY INK SYSTEM AT 1ST TIME

Tanks work :

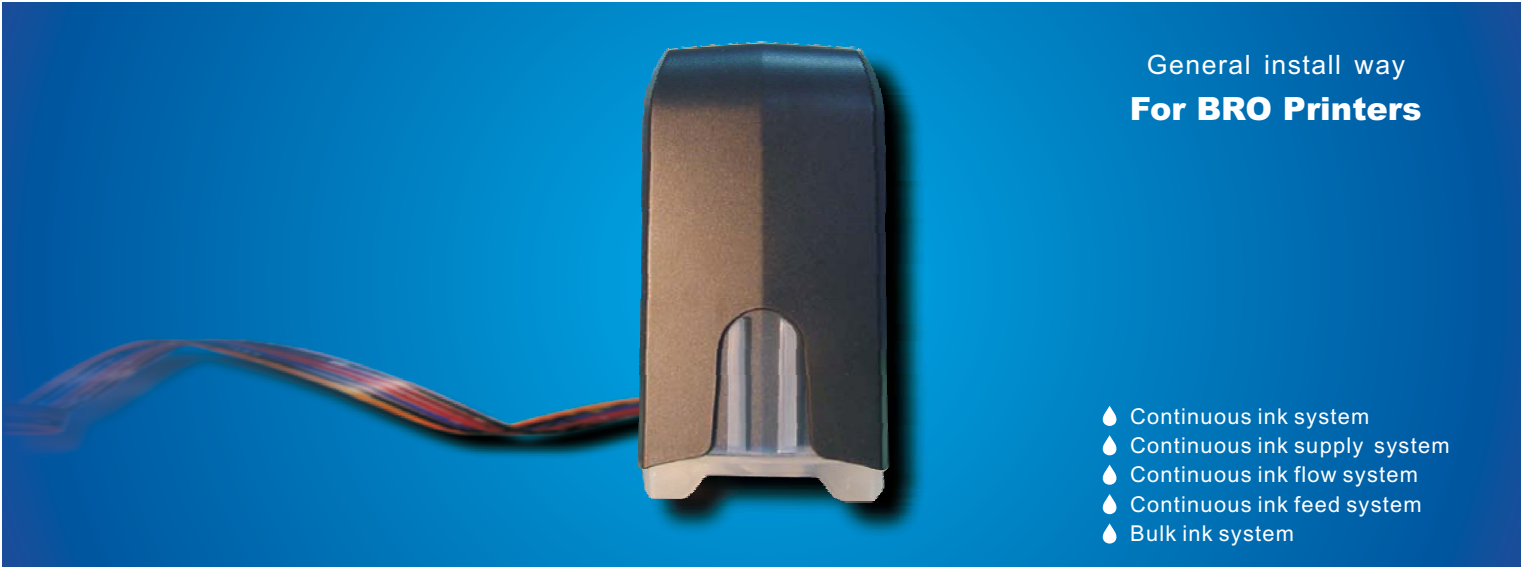
① OPEN LEFT COVERS

② REPLACE ALL THE PLUGS to 'L' PLUGS

③ CLOSE LEFT COVERS



WHEN WORKS, OPEN ALL THE PLUGS ON ARROW SIDES



General install way
For BRO Printers

- 💧 Continuous ink system
- 💧 Continuous ink supply system
- 💧 Continuous ink flow system
- 💧 Continuous ink feed system
- 💧 Bulk ink system

Unpacking Instruction

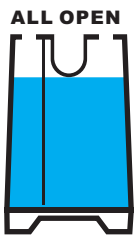
1. CIS ink system (Continuous ink system) 1 Set
2. Pipeline Clincher or Arm Support 1 Set
3. Installation Instruction 1 pcs
4. Syringe 1 set

Note

1. Not drinkable, keep it out of the reach of children
2. Avoid exposure to direct sunshine and don't keep it in the high or freezing temperature.
3. Avoid collision and fallen down.
4. Please do not take out the cartridges at random after install the CIS ink system.
5. Using it in the temperature of 10-40°C
6. The CIS ink system has passed the strict compatible checking, we recommend to use our ink, to ensure the printing quality.
7. Mix two different brand ink into the CIS ink system is not recommended.

8. Keep the ink tanks and printer in the same level. Do not place the tanks higher or lower than their printer

Refilling ink



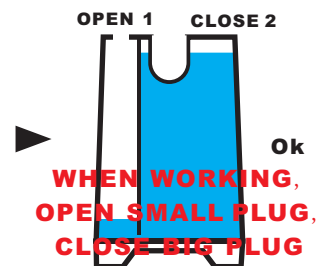
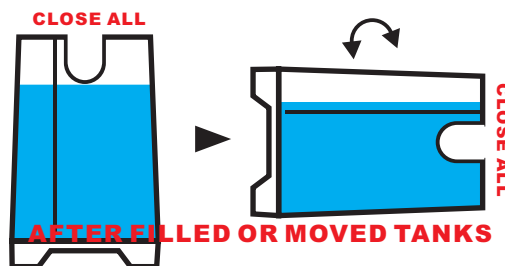
FILL INK TO THIS LEVEL
(Recommend)

FILL INK HIGH TO FULL
(No recommend)



- 1) **REFILL INKS:** When refilling inks or filling inks into an empty ink system, Please pull out the rubber plugs from the ink tanks; use a syringe to fill ink;
- 2) **REMOVE AIR:** Just for filling inks into an empty ink system at first time, Pull out rubber plugs from the cartridge, use a syringe to draw air on the holes for air-removing, then the ink will flow into the ink cartridges from the tanks automatically. After filled, stuff all the holes with the rubber plugs.

Tanks working :





! Pipelines must go through the gaps on the bottom



Reset Procedure

If the indicator light flashing when printing, it tells that you need to reset the chip to full status.

, Please reinstall the cartridges again, and choose 'yes' when the printer ask you whether replace new cartridges. shall show full ink.

You can start printing as usual.